

Samples

Technical

Technical

All our blocks are burnished twice and sealed

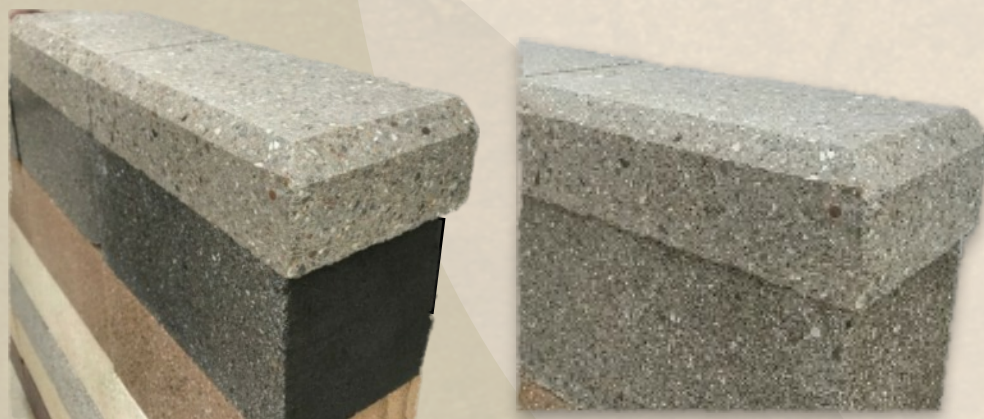
Burnished blocks in different sizes and colors:



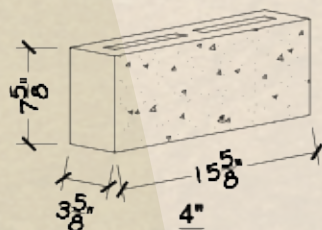
Burnished brick:



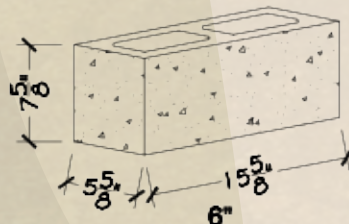
Burnished water table:



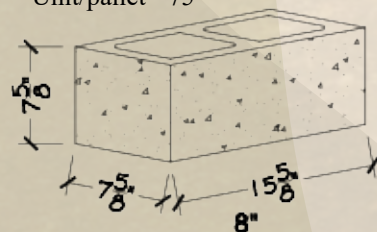
4 x 8 x 16 Partition
Lightweight - 18 lbs.
Normal weight - 24 lbs.
Unit/pallet - 120



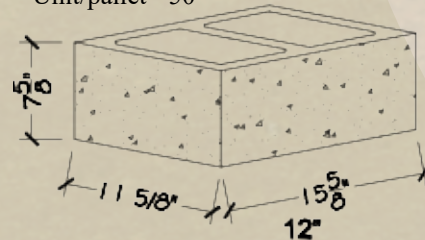
6 x 8 x 16 Stretcher with end
Lightweight - 22 lbs.
Normal weight - 29 lbs.
Unit/pallet - 120



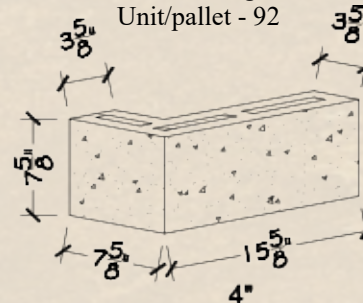
8 x 8 x 16 Stretcher & Corner
Lightweight - 28 lbs.
Unit/pallet - 90
Normal weight - 37 lbs.
Unit/pallet - 75



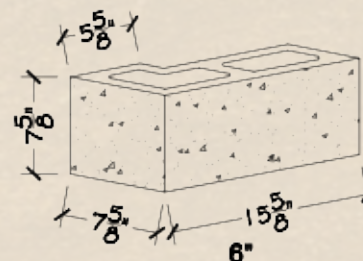
12 x 8 x 16 Stretcher with end
Lightweight - 39 lbs.
Unit/pallet - 60
Normal weight - 52 lbs.
Unit/pallet - 50



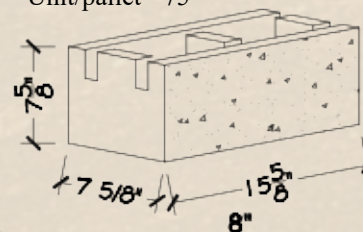
4 x 8 x 16 "L" Corner
Lightweight - 27 lbs.
Normal weight - 36 lbs.
Unit/pallet - 92



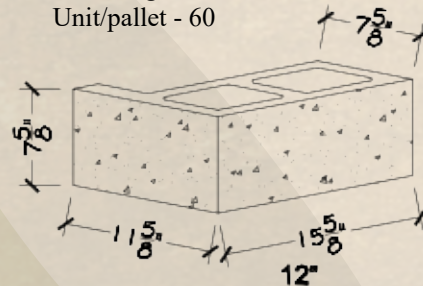
6 x 8 x 16 "L" Corner
Lightweight - 26 lbs.
Normal weight - 34 lbs.
Unit/pallet - 96



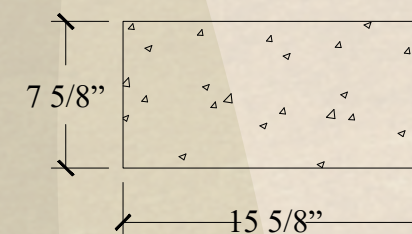
8 x 8 x 16 KO BOND BEAM
Lightweight - 30 lbs.
Unit/pallet - 90
Normal weight - 40 lbs.
Unit/pallet - 75



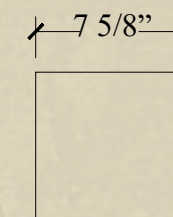
12 x 8 x 16 "L" Corner
Unit weight - 52 lbs.
Unit/pallet - 60



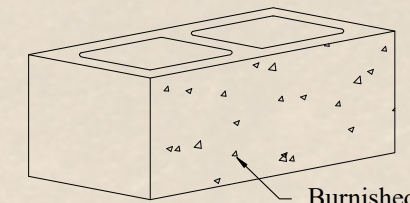
8x8x16 Burnished Block - Standard



1 Front View

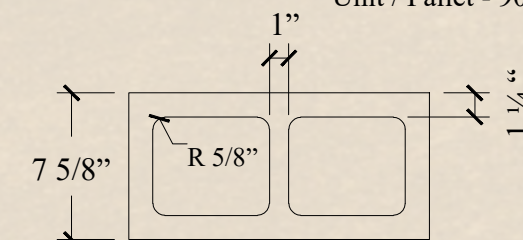


2 Side View



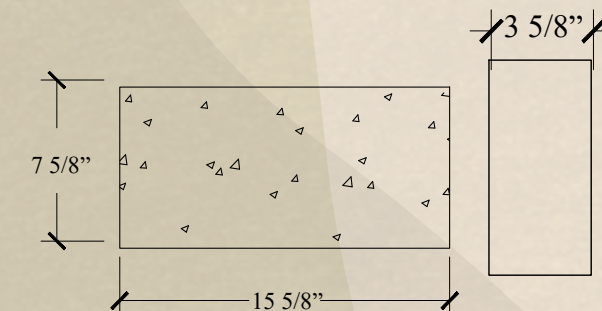
4 Oblique View

Light Weight - 28lbs
Normal Weight - 37lbs
Unit / Pallet - 90



3 Top View

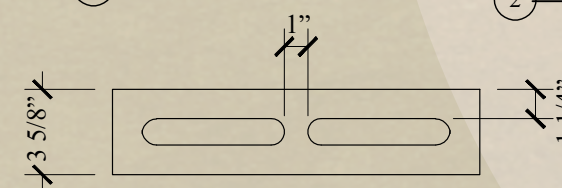
4x8x16 Burnished Block - Standard



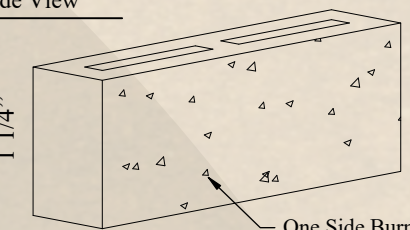
1 Front View

2 Side View

Light Weight - 18lbs
Normal Weight - 24lbs
Unit / Pallet - 120



3 Top View



4 Oblique View

Colors

Available in 15 colors:



Cimarron Sand



Camargo Gold



Muskogee Buff



Osage Cream



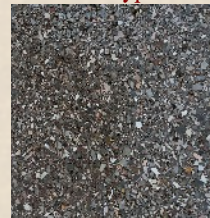
White Gypsum



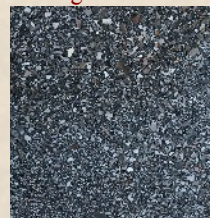
Kingfisher Khaki



Perry Maroon



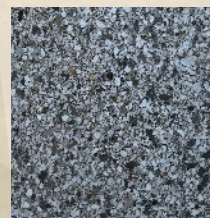
Taloka Chocolate



Charcoal



Normal Gray



Light Gray



Anadarko Brown



Red Dirt



Rose Rock



Arbuckle Silver

Custom inscriptions on demand:



All our blocks are burnished twice and sealed

Information

Burnished Block is a highly polished, beautifully exposed aggregate finish for a distinctive look. Burnished block offers stunning coloration effects, yielding unlimited subtleties in hue and tone.

With its smooth surface and modern, polished look, the beautifully finished burnished blocks are perfect for interior or exterior walls. On exterior walls, the burnished blocks will not only confer beauty to the building, but will also ensure an enduring, waterproof and weatherproof finish. Your burnished block wall is virtually maintenance-free!

Specific Advantages and Benefits:

- Low installation costs
- Virtually maintenance free surfaces
- Durable finish
- Can be used both indoor and outdoor
- Enhances beauty for any project
- Unlimited design combinations
- High versatility, in load-bearing or veneer applications:
- Can be used for both residential and commercial projects.
- Fireproof, energy efficient and sound absorbing

Renaissance Cast Stone also has extensive experience in historical cast stone restoration.

Contact us today to learn how Renaissance Cast Stone can add more value to your next Project:

- Casting
- Replication
- Restoration
- New Construction
- Existing



Contact Information

2135 SW 19th St. • Oklahoma City, OK 73108

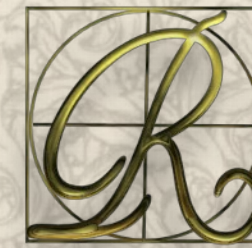
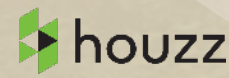
Tel: (405) 514-4780 • Fax: (405) 563-9065

For Eastern Oklahoma / Arkansas: Call Dan Rudder 469-556-6179

Email: office@renaissancecaststone.com

www.renaissancecaststone.com

Follow us on social media:



RENAISSANCE
Cast Stone

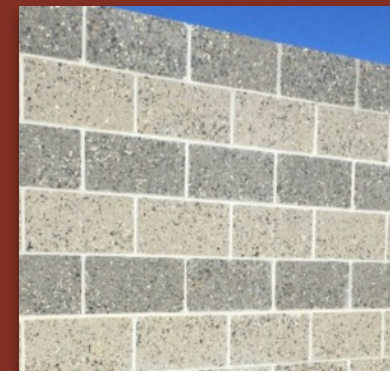
Burnished Blocks

Bring out the Beauty of
your Masonry Projects!

LOW MAINTENANCE

BEAUTY

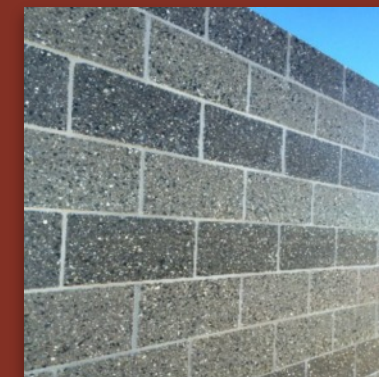
APPEAL



weatherproof

HIGH

quality



VERSATILITY

www.renaissancecaststone.com