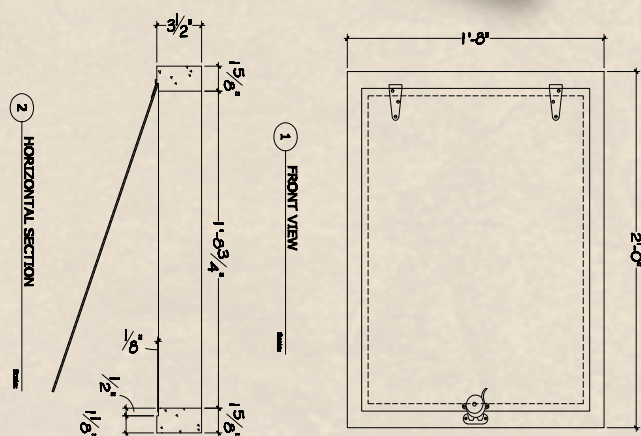
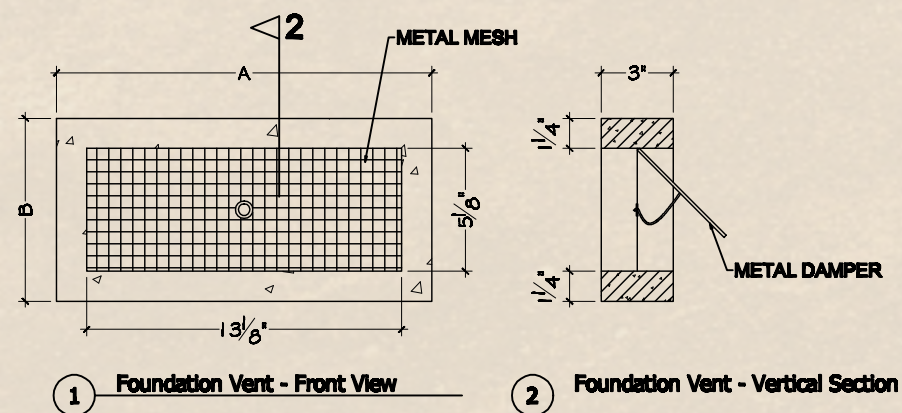


ACCESS DOORS



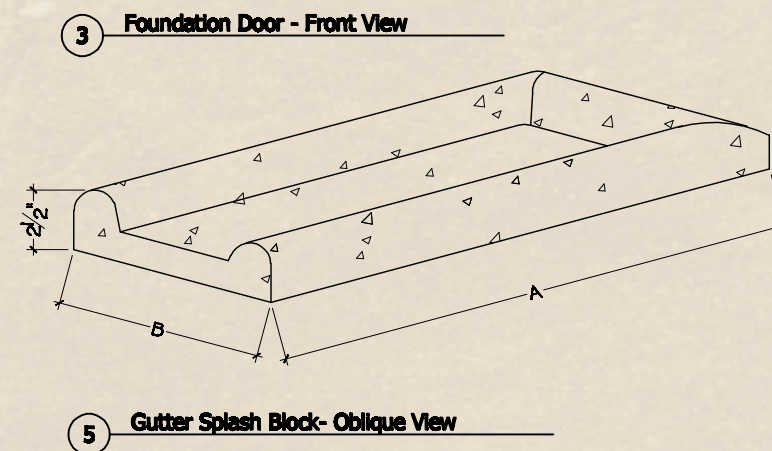
PACKAGE #1
 15 Foundation Doors 20"x24"
 50 Foundation Vents 7 5/8"x15 5/8"
 Total: \$ 936.45

VENTS

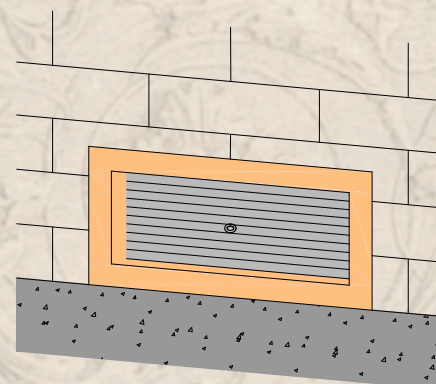
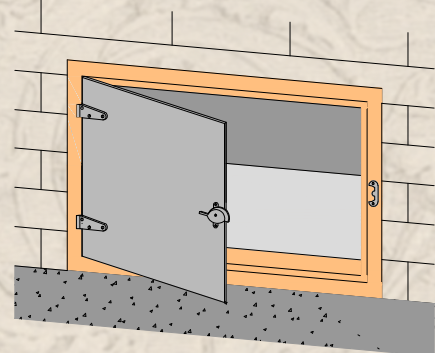


PACKAGE #2
 20 Foundation Doors 16"x24"
 50 Foundation Vents 7 5/8"x15 5/8"
 Total: \$ 1, 033.60

SPLASH GUARDS



PACKAGE #3
 30 Gutter Splash Blocks 10 1/2"x29 1/2"
 Total: \$ 345.00



PRODUCT	Dim. A	Dim. B	Price
Foundation Door	24"	16"	\$ 25.43 ea
Foundation Door	24"	20"	\$ 27.43 ea
* Foundation Vent	15 5/8"	7 5/8"	\$ 10.50 ea
Gutter Splash Block	29 1/2"	10 1/2"	\$ 11.50 ea

*For orders over 50

All of our foundation vents, Foundation doors and splash blocks are made with 5,000 psi concrete and 3/8" inch reinforcement bar (as needed) for stability. Each one hand crafted for perfection.

WWW.RENAISSANCECASTSTONE.COM



Our Contact Information

Contact Renaissance Cast Stone today to see how we can help enhance the beauty of your home or business with our timeless cast stone products.

2135 SW 19 th Street,
Oklahoma City, OK 73108

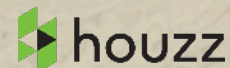
Tel: (405) 514-4780

Fax: (405) 563-9065

For Eastern Oklahoma / Arkansas:
call Dan Rudder 469-556-6179

Email: office@renaissancecaststone.com

Follow us on social media:



To better understand Renaissance Cast Stone's abilities and expertise, please view some of the Projects our website

Renaissance Cast Stone also has extensive experience in historical Cast Stone Restoration.

Contact us today to learn how Renaissance Cast Stone can add more value to your next project.

- Casting
- Replication
- Restoration
- New Construction
- Existing

Services Provided:

- Residential and Commercial
- New creation, replication, restoration, sketch renderings & 3D drawings.
- Collaboration with other professionals

Renaissance Cast Stone has the ability to recreate, renovate and restore virtually any type of damaged or missing original plaster work, using both traditional and modern techniques.

www.renaissancecaststone.com

■ ACCESS DOORS

■ VENTS

■ SPLASH GUARDS

